

Technical Data Sheet

CODE 16185

CA 200 MD E RF

Centrifugal duct fans for roof mounting



Certifications



IMQ



CE



IMQ Performance



EAC

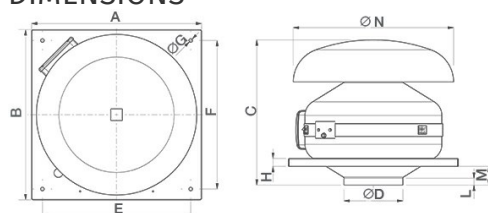


G-Mark

TECHNICAL AND PERFORMANCE DATA

Absorbed power 1st speed (W)	33	Delivery 1st speed (l/s)	86.1
Frequency (Hz)	50/60	Delivery 1st speed (m ³ /h)	310
Insulation Class	II ⁰	Max delivery at max speed (l/s)	194.7
IP	44	Max delivery at max speed (m ³ /h)	700
Max absorbed Power at 60Hz (W)	115	Pressure - 1st speed (mmH2O)	31.9
Max ambient temperature for continuous operation (°C)	55	Pressure - 1st speed (Pa)	313.4
Max. absorbed Current at max. speed (A)	0,42	Pressure max - max speed (mmH2O)	44.9
Max. absorbed Current at min. speed (A)	0.33	Pressure max - max speed (Pa)	440.6
Max. absorbed power at max speed (W)	95	RPM max	2555
Nominal Diameter (mm)	200	RPM min	1156
Voltage (V)	220-240	Sound pressure level Lp [dB (A)] 3m - max speed	31.7
Weight (Kg)	9,6	Sound pressure level Lp [dB (A)] 3m - min speed	23

DIMENSIONS



Size A (mm)	424
Size B (mm)	424
Size C (mm)	365
Size D (mm)	∅ 197
Size E (mm)	370
Size F (mm)	370
Size G (mm)	∅ 9
Size H (mm)	20
Size L (mm)	20
Size M (mm)	49
Size N (mm)	∅ 400
Size O (mm)	250

PER INFORMAZIONI:

Servizio al Cliente: tel +39 02 90699395 premendo 1 dopo messaggio registrato (consulenza su prodotti e impianti)

Pre & Post Vendita: fax +39 02 90699302

Email prevendita: prevendita@vortice-italy.com

Technical Data Sheet

CODE 16185

CA 200 MD E RF

Centrifugal duct fans for roof mounting

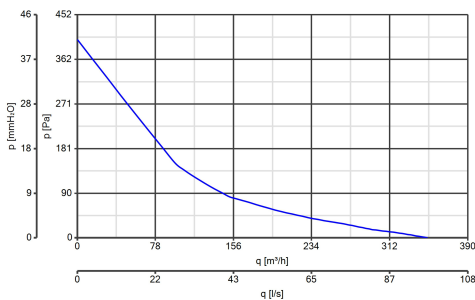
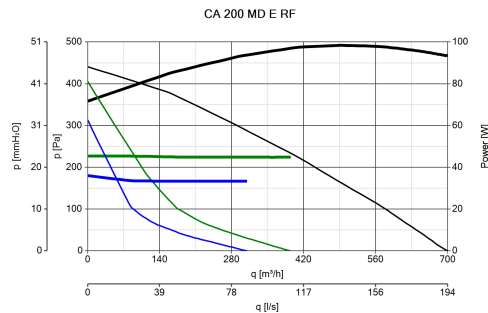


DESCRIPTION

- Pickled and phosphated steel housing/roof mounting plate with polyester powder-coated finish, resistant to the aggressive action of atmospheric agents.
- Nominal diameter 200 mm.
- 3 speed motor-fan, speed adjustable through TRIO-CA optional control (cod. 12869), consisting of:
 - o External rotor AC motor with thermal overload cutout and shaft

- o turning in ball bearings,
- o backward curved impeller.
- Operation controllable by remote sensors monitoring: Temperature, Relative Humidity, Smoke and Presence.
- Zinc-coated steel brackets for wall mounting.
- IMQ SAFETY and IMQ PERFORMANCE certifications.

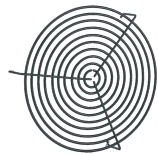
CURVES



ACCESSORIES



**KIT SCB
(TRASF.E.C.)**
Code 22481



**CA-G 200
(GRIGLIA DI
PROTEZIONE)**
Code 22765



**C 1.5
(COMANDO EL.
1.5 A)**
Code 12966



**C 2.5
(COMANDO EL.
2.5 A)**
Code 12967

PER INFORMAZIONI:

Servizio al Cliente: tel +39 02 90699395 premendo 1 dopo messaggio registrato (consulenza su prodotti e impianti)
Pre & Post Vendita: fax +39 02 90699302
Email prevendita: prevendita@vortice-italy.com